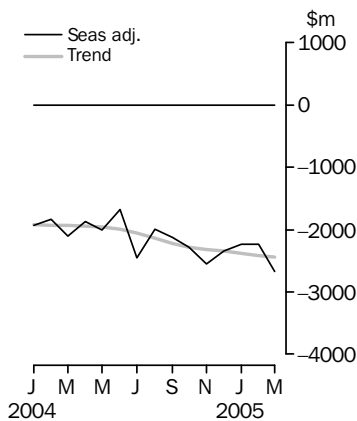


INTERNATIONAL TRADE IN GOODS AND SERVICES

AUSTRALIA

EMBARGO: 11.30AM (CANBERRA TIME) THURS 5 MAY 2005

Balance on goods and services



KEY FIGURES

	January 2005	February 2005	March 2005	Feb 05 to Mar 05
	\$m	\$m	\$m	% change
TREND				
Balance on goods & services	-2 376	-2 417	-2 445	..
Credits (exports of goods & services)	13 297	13 352	13 384	-
Debits (imports of goods & services)	15 673	15 769	15 829	-
SEASONALLY ADJUSTED				
Balance on goods & services	-2 237	-2 238	-2 672	..
Credits (exports of goods & services)	13 472	13 403	13 284	-1
Debits (imports of goods & services)	15 709	15 641	15 956	2

.. not applicable

— nil or rounded to zero (including null cells)

KEY POINTS

TREND ESTIMATES

- The provisional trend estimate of the balance on goods and services was a deficit of \$2,445m in March 2005, an increase of \$28m on the deficit in February.
- Goods and services credits rose \$32m to \$13,384m. Non-rural and other goods rose \$14m, while rural goods fell \$27m (1%). Services credits rose \$45m (1%).
- Goods and services debits rose \$60m to \$15,829m. Intermediate and other goods rose \$45m (1%) and consumption goods rose \$35m (1%), while capital goods fell \$17m (1%). Services debits fell \$3m.

SEASONALLY ADJUSTED ESTIMATES

- In seasonally adjusted terms, the balance on goods and services was a deficit of \$2,672m in March, an increase of \$434m on the deficit in February.
- Goods and services credits fell \$119m (1%) to \$13,284m. Rural goods fell \$171m (8%), while non-rural and other goods rose \$20m. Services credits rose \$32m (1%).
- Goods and services debits rose \$315m (2%) to \$15,956m. Intermediate and other goods rose \$503m (9%) and consumption goods rose \$16m, while capital goods fell \$111m (4%). Services debits fell \$93m (3%).

ORIGINAL ESTIMATES

- In original terms, the March balance on goods and services was a deficit of \$2,132m, an increase of \$1,383m on the deficit in February. Goods and services credits rose \$145m (1%) and goods and services debits rose \$1,528m (11%).
- In the nine months to March, exports of non-rural and other goods were up \$10.4b (17%) and rural goods were up \$2.0b (12%) on the corresponding period in 2003–04.

INQUIRIES

For further information about these and related statistics, contact the National Information and Referral Service on 1300 135 070 or Artur Andrysiak on Canberra (02) 6252 6792.

NOTES

FORTHCOMING ISSUES

<i>ISSUE</i>	<i>RELEASE DATE</i>
April 2005	2 June 2005
May 2005	4 July 2005
June 2005	2 August 2005
July 2005	30 August 2005
August 2005	4 October 2005
September 2005	3 November 2005

AVAILABILITY OF DETAILED EXPORTS DATA

The problem identified in the February 2005 issue of this publication, which prevented the release of detailed exports data for the months of January and February 2005, has been resolved. The full set of detailed trade exports data is now available.

REVISIONS

Revisions were made to incorporate the latest available data relating to merchandise trade (including complete exports data for January and February 2005) and the quarterly Survey of International Trade in Services. In original terms, these revisions have increased the deficit on goods and services for the eight months to February 2005 by \$107m.

AVAILABILITY OF DETAILED SERVICES DATA

Calendar and financial year statistics on Australian international trade in services by partner country and state are being released in conjunction with this issue. These data were previously released in feature articles associated with this publication. The feature articles have been replaced by AusStats tables containing detailed times series data. A list of these new AusStats tables, numbered 21 to 36, is available on page 4 of this publication. Corresponding with every March monthly release, the calendar year data will be updated, while with every September monthly release, the financial year data will be updated.

ABBREVIATIONS

\$b	billion (thousand million) dollars
\$m	million dollars
ABS	Australian Bureau of Statistics
APEC	Asia Pacific Economic Co-operation
ASEAN	Association of South-East Asian Nations
n.e.s.	not elsewhere specified
n.i.e.	not included elsewhere
OECD	Organisation for Economic Co-operation and Development
SAR	Special Administrative Region
SITC	Standard International Trade Classification

Dennis Trewin
Australian Statistician

CONTENTS

page

Tables on AusStats	4
--------------------	---

ANALYSIS

Analysis and comments	5
-----------------------	---

TABLES

INTERNATIONAL TRADE IN GOODS AND SERVICES – BALANCE OF PAYMENTS BASIS

1 Goods and services, summary, seasonally adjusted and trend estimates	10
2 Goods and services, summary, original	11
3 Goods credits, original	12
4 Goods debits, original	13
5 Services, summary, original	14
6 Services, summary, seasonally adjusted and trend estimates	15
7 Services, original, quarterly	16

INTERNATIONAL MERCHANDISE TRADE – RECORDED TRADE BASIS

8 International merchandise exports, by commodity	17
9 International merchandise imports, by commodity	20
10 International merchandise trade, by country and country groups	23
11 International merchandise trade, by state	24

OTHER TABLES

12 Period average exchange rates per Australian dollar	25
---	----

OTHER INFORMATION

Explanatory Notes	26
Appendix – Related articles	29

TABLES ON AUSSTATS

TABLES AVAILABLE ON AUSSTATS

Data available on the ABS web site <<http://www.abs.gov.au>> include:

- longer time series of all tables contained in this publication
- additional tables listed below:

Tables 21 to 36 inclusive are updated on annual basis - with the March issue for calendar year and with the September issue for financial year.

13 Merchandise exports by Broad Economic Category (BEC)

14 Merchandise exports by industry of origin (ANZSIC)

15 Merchandise imports by Broad Economic Category (BEC)

16 Merchandise imports by Balance of Payments Broad Economic Category (BoPBEC)

17 Merchandise imports by industry of origin (ANZSIC)

18 Merchandise exports, state by country and country groups

19 Merchandise imports, state by country and country groups

20 Monthly forward seasonal adjustment factors

21 International trade in services, credits, state by financial year

22 International trade in services, credits, financial year by state

23 International trade in services, debits, state by financial year

24 International trade in services, debits, financial year by state

25 International trade in services, credits, state by calendar year

26 International trade in services, credits, calendar year by state

27 International trade in services, debits, state by calendar year

28 International trade in services, debits, calendar year by state

29 International trade in services, credits, financial year by country and service

30 International trade in services, credits, service by financial year and by country

31 International trade in services, credits, calendar year by country and service

32 International trade in services, credits, service by calendar year and by country

33 International trade in services, debits, financial year by country and service

34 International trade in services, debits, service by financial year and by country

35 International trade in services, debits, calendar year by country and service

36 International trade in services, debits, service by calendar year and by country.

ANALYSIS AND COMMENTS

BALANCE ON GOODS AND SERVICES

The trend estimate of the balance on goods and services in March 2005 was a deficit of \$2,445m, an increase of \$28m on the deficit in February.

In seasonally adjusted terms, the balance on goods and services in March 2005 was a deficit of \$2,672m, an increase of \$434m on the deficit in February.

The sum of the seasonally adjusted balances for the three months to March 2005 was a deficit of \$7,147m, a decrease of \$27m on the deficit of \$7,174m for the three months to December 2004. However, if the more detailed seasonal factors used in compiling quarterly Balance of Payments are applied, the March quarter 2005 deficit was \$7,072m, an increase of \$372m on the December quarter 2004 deficit of \$6,700m.

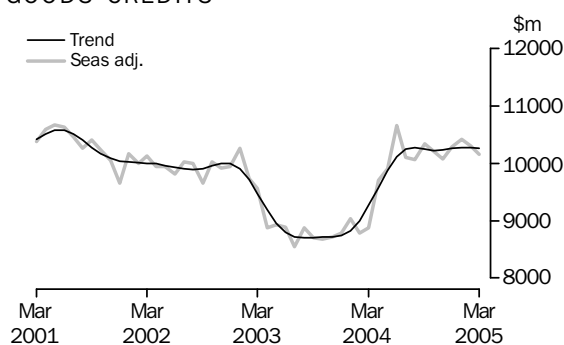
EXPORTS OF GOODS AND SERVICES

The trend estimate of goods and services credits rose \$32m between February and March to \$13,384m.

In seasonally adjusted terms, goods and services credits fell \$119m (1%) between February and March to \$13,284m. Rural goods fell \$171m (8%), while services credits rose \$32m (1%) and non-rural and other goods rose \$20m.

Exports of goods

GOODS CREDITS



RURAL GOODS

The trend estimate of rural goods exports fell \$27m (1%) to \$1,959m.

In seasonally adjusted terms, exports of rural goods fell \$171m (8%) to \$1,904m.

In original terms, exports of rural goods rose \$8m to \$2,032m.

Movements in the original series contributing to the fall in seasonally adjusted terms were:

- other rural, up marginally, compared with an average February to March rise of 8% over the previous three years
- cereal grains and cereal preparations, down \$98m (21%), compared with an average February to March fall of 10% over the previous three years
- wool and sheepskins, up \$15m (6%), compared with an average February to March rise of 24% over the previous three years.

ANALYSIS AND COMMENTS *continued*

Exports of goods *continued*

NON-RURAL AND OTHER GOODS

The trend estimate of non-rural and other goods exports rose \$14m to \$8,306m.

In seasonally adjusted terms, exports of non-rural and other goods rose \$20m to \$8,247m.

In original terms, exports of non-rural and other goods rose \$962m (13%) to \$8,348m.

Movements in the original series contributing to the rise in seasonally adjusted terms were:

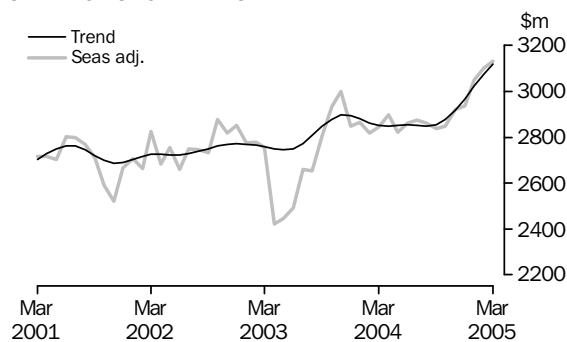
- metal ores and minerals, up \$402m (32%), compared with an average February to March rise of 14% over the previous three years
- other goods, down \$5m (1%), compared with an average February to March fall of 9% over the previous three years.

Partly offsetting these effects were:

- coal, coke and briquettes, up \$7m (1%), compared with an average February to March rise of 13% over the previous three years
- metals (excluding gold), up \$112m (18%), compared with an average February to March rise of 27% over the previous three years
- other non-rural, up \$131m (16%), compared with an average February to March rise of 21% over the previous three years.

Exports of Services

SERVICES CREDITS



In trend terms, services credits rose \$45m (1%) to \$3,119m.

Seasonally adjusted, services credits rose \$32m (1%) to \$3,133m.

Movements in the seasonally adjusted components contributing to this rise were:

- other services, up \$16m (2%)
- passenger and other transportation services, up \$15m (2%).

Seasonally adjusted, tourism related services credits fell \$30m (2%) to \$1,913m.

ANALYSIS AND COMMENTS *continued*

IMPORTS OF GOODS AND SERVICES

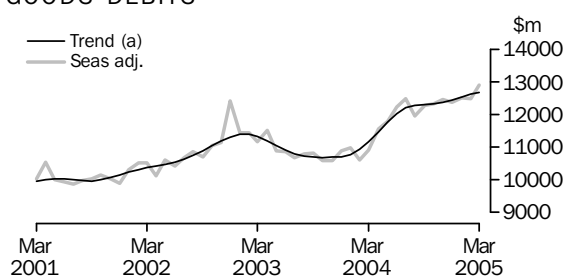
The trend estimate of goods and services debits rose \$60m between February and March to \$15,829m.

In seasonally adjusted terms, goods and services debits rose \$315m (2%) to \$15,956m. Intermediate and other goods rose \$503m (9%) and consumption goods rose \$16m, while capital goods fell \$111m (4%) and services debits fell \$93m (3%).

Preliminary analysis shows that goods imports volumes, in seasonally adjusted terms, increased about 3.1% during the March quarter 2005. The Chain Laspeyres price index fell about 1.9% and the implicit price deflator fell about 2.2%. The final volume and price outcomes will be published in the March quarter 2005 issue of *Balance of Payments and International Investment Position, Australia* (5302.0).

Imports of goods

GOODS DEBITS



(a) Trend estimates exclude abnormal imports of aircraft in December 2002.

CONSUMPTION GOODS

The trend estimate of imports of consumption goods rose \$35m (1%) to \$4,096m.

In seasonally adjusted terms, imports of consumption goods rose \$16m to \$4,070m.

In original terms, imports of consumption goods fell \$11m to \$3,701m.

The main movement in the original series contributing to the rise in seasonally adjusted terms was food and beverages, up \$49m (12%), compared with an average February to March rise of 9% over the previous three years.

Partly offsetting this effect was:

- textiles, clothing and footwear down \$142m (25%), compared with an average February to March fall of 5% over the previous three years
- household electrical items, down \$9m (3%), in contrast to an average February to March rise of 11% over the previous three years.

CAPITAL GOODS

The trend estimate of imports of capital goods fell \$17m (1%) to \$2,856m.

In seasonally adjusted terms, imports of capital goods fell \$111m (4%) to \$2,838m.

In original terms, imports of capital goods rose \$418m (17%) to \$2,896m.

Movements in the original series contributing to the fall in seasonally adjusted terms were:

- machinery and industrial equipment, up \$8m (1%), compared with an average February to March rise of 9% over the previous three years

ANALYSIS AND COMMENTS *continued*

Imports of goods continued

CAPITAL GOODS *continued*

- telecommunications equipment, up \$50m (16%), compared with an average February to March rise of 36% over the previous three years.

Partly offsetting these effects were:

- industrial transport equipment n.e.s., up \$81m (24%), compared with an average February to March rise of 9% over the previous three years
- civil aircraft, up \$91m, compared with smaller February to March rises over the previous three years.

INTERMEDIATE AND OTHER GOODS

The trend estimate of imports of intermediate and other goods rose \$45m (1%) to \$5,740m.

In seasonally adjusted terms, intermediate and other goods imports rose \$503m (9%) to \$6,002m.

In original terms, imports of intermediate and other goods rose \$968m (19%) to \$6,052m.

Movements in the original series contributing to the rise in seasonally adjusted terms were:

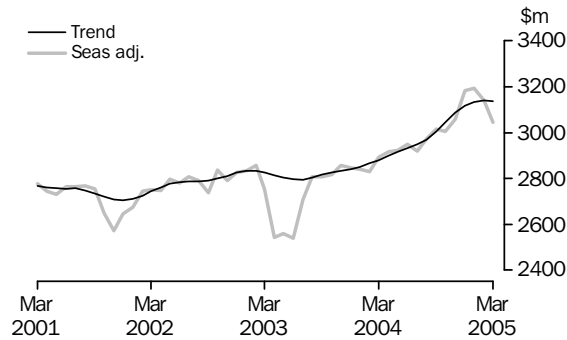
- fuels and lubricants, up \$425m (44%), compared with an average February to March rise of 17% over the previous three years (crude petroleum volumes rose 29% and prices rose 13% between February and March)
- other goods, up \$115m (34%), compared with an average February to March rise of 1% over the previous three years
- parts for transport equipment, up \$106m (20%), compared with an average February to March rise of 12% over the previous three years
- other parts for capital goods, up \$97m (13%), compared with an average February to March rise of 10% over the previous three years.

Partly offsetting these effects were:

- processed industrial supplies n.e.s., up \$94m (8%), compared with an average February to March rise of 14% over the previous three years
- iron and steel, up \$5m (2%), compared with an average February to March rise of 8% over the previous three years
- plastics, up \$7m (3%), compared with an average February to March rise of 12% over the previous three years.

Imports of Services

SERVICES DEBITS



In trend terms, services debits fell \$3m to \$3,137m.

Seasonally adjusted, services debits fell \$93m (3%) to \$3,046m.

Movements in the seasonally adjusted components contributing to this fall were:

- freight transportation services, down \$62m (10%)
- travel services, down \$29m (3%)
- passenger and other transportation services, down \$11m (2%).

Partly offsetting these effects were other services, up \$9m (1%).

Seasonally adjusted, tourism related services debits fell \$92m (6%) to \$1,504m.

GOODS AND SERVICES(a), Summary: Seasonally Adjusted and Trend Estimates

Months	BALANCE	CREDITS					DEBITS					
	On goods and services	Total goods and services	Total goods	Rural goods(b)	Non-rural and other goods(b)	Total services	Total goods and services	Total goods	Consumption goods	Capital goods	Intermediate and other goods	Total services
	\$m	\$m	\$m	\$m	\$m	\$m	\$m	\$m	\$m	\$m	\$m	\$m
SEASONALLY ADJUSTED												
2004												
January	-1 933	11 896	9 031	2 139	6 892	2 865	-13 829	-10 988	-3 604	-2 716	-4 668	-2 841
February	-1 838	11 601	8 781	2 117	6 664	2 820	-13 439	-10 608	-3 372	-2 430	-4 806	-2 831
March	-2 098	11 715	8 870	2 003	6 867	2 845	-13 813	-10 921	-3 579	-2 599	-4 743	-2 892
April	-1 866	12 608	9 711	2 254	7 457	2 897	-14 474	-11 559	-3 815	-2 689	-5 055	-2 915
May	-2 002	12 731	9 910	2 431	7 479	2 821	-14 733	-11 811	-3 804	-2 819	-5 188	-2 922
June	-1 672	13 517	10 657	2 672	7 985	2 860	-15 189	-12 239	-3 955	-3 044	-5 240	-2 950
July	-2 451	12 979	10 106	2 422	7 684	2 873	-15 430	-12 509	-3 852	-3 205	-5 452	-2 921
August	-1 997	12 931	10 069	2 330	7 739	2 862	-14 928	-11 956	-3 757	-2 889	-5 310	-2 972
September	-2 124	13 177	10 339	2 283	8 056	2 838	-15 301	-12 287	-3 866	-2 867	-5 554	-3 014
October	-2 287	13 057	10 209	2 137	8 072	2 848	-15 344	-12 339	-3 806	-3 074	-5 459	-3 005
November	-2 546	12 993	10 073	2 093	7 980	2 920	-15 539	-12 482	-3 875	-2 945	-5 662	-3 057
December	-2 341	13 225	10 289	2 042	8 247	2 936	-15 566	-12 383	-3 877	-2 901	-5 605	-3 183
2005												
January	-2 237	13 472	10 422	2 004	8 418	3 050	-15 709	-12 515	-4 165	-2 781	-5 569	-3 194
February	-2 238	13 403	10 302	2 075	8 227	3 101	-15 641	-12 502	-4 054	-2 949	-5 499	-3 139
March	-2 672	13 284	10 151	1 904	8 247	3 133	-15 956	-12 910	-4 070	-2 838	-6 002	-3 046
TREND ESTIMATES												
2004												
January	-1 921	11 705	8 825	2 020	6 805	2 880	-13 626	-10 776	-3 514	-2 583	-4 679	-2 850
February	-1 930	11 863	9 001	2 101	6 900	2 862	-13 793	-10 928	-3 562	-2 602	-4 764	-2 865
March	-1 936	12 116	9 266	2 199	7 067	2 850	-14 052	-11 172	-3 636	-2 657	-4 879	-2 880
April	-1 944	12 426	9 578	2 304	7 274	2 848	-14 370	-11 471	-3 721	-2 741	-5 009	-2 899
May	-1 955	12 734	9 882	2 392	7 490	2 852	-14 689	-11 772	-3 794	-2 841	-5 137	-2 917
June	-1 990	12 975	10 120	2 442	7 678	2 855	-14 965	-12 031	-3 842	-2 936	-5 253	-2 934
July	-2 056	13 101	10 249	2 440	7 809	2 852	-15 157	-12 209	-3 855	-3 001	-5 353	-2 948
August	-2 141	13 125	10 276	2 380	7 896	2 849	-15 266	-12 297	-3 843	-3 020	-5 434	-2 969
September	-2 220	13 104	10 248	2 283	7 965	2 856	-15 324	-12 320	-3 833	-3 000	-5 487	-3 004
October	-2 281	13 101	10 223	2 184	8 039	2 878	-15 382	-12 336	-3 851	-2 963	-5 522	-3 046
November	-2 317	13 149	10 231	2 110	8 121	2 918	-15 466	-12 380	-3 896	-2 928	-5 556	-3 086
December	-2 345	13 225	10 258	2 061	8 197	2 967	-15 570	-12 454	-3 955	-2 905	-5 594	-3 116
2005												
January	-2 376	13 297	10 275	2 021	8 254	3 022	-15 673	-12 539	-4 011	-2 887	-5 641	-3 134
February	-2 417	13 352	10 278	1 986	8 292	3 074	-15 769	-12 629	-4 061	-2 873	-5 695	-3 140
March	-2 445	13 384	10 265	1 959	8 306	3 119	-15 829	-12 692	-4 096	-2 856	-5 740	-3 137

(a) For sign conventions, see paragraph 9 of the Explanatory Notes.

(b) For all time periods, estimates for sugar, sugar preparations and honey are included in Non-rural and other goods.

GOODS AND SERVICES(a), Summary: Original

	BALANCE	CREDITS					DEBITS					
	<i>On goods and services</i>	<i>Total goods and services</i>	<i>Total goods</i>	<i>Rural goods(b)</i>	<i>Non-rural and other goods(b)</i>	<i>Total services</i>	<i>Total goods and services</i>	<i>Total goods</i>	<i>Con-sumption goods</i>	<i>Capital goods</i>	<i>Inter-mediate and other goods</i>	<i>Total services</i>
	\$m	\$m	\$m	\$m	\$m	\$m	\$m	\$m	\$m	\$m	\$m	\$m
FINANCIAL YEAR												
2001-02	-1 373	153 200	120 950	30 085	90 865	32 250	-154 573	-121 942	-37 422	-27 208	-57 312	-32 631
2002-03	-18 876	148 293	115 800	25 484	90 316	32 493	-167 169	-134 278	-41 228	-31 554	-61 496	-32 891
2003-04	-23 777	143 484	109 504	24 560	84 944	33 980	-167 261	-133 026	-42 916	-32 118	-57 992	-34 235
MONTHS												
2004												
January	-1 774	11 245	7 967	1 868	6 099	3 278	-13 019	-10 102	-3 223	-2 404	-4 475	-2 917
February	-185	11 947	8 314	2 090	6 224	3 633	-12 132	-9 589	-3 092	-2 041	-4 456	-2 543
March	-2 278	12 014	9 236	2 139	7 097	2 778	-14 292	-11 529	-3 684	-2 681	-5 164	-2 763
April	-1 732	12 116	9 401	2 202	7 199	2 715	-13 848	-10 986	-3 486	-2 484	-5 016	-2 862
May	-1 392	12 585	10 149	2 519	7 630	2 436	-13 977	-11 166	-3 459	-2 704	-5 003	-2 811
June	-2 534	13 164	10 582	2 607	7 975	2 582	-15 698	-12 728	-3 791	-3 661	-5 276	-2 970
July	-1 969	13 553	10 129	2 379	7 750	3 424	-15 522	-12 462	-3 991	-3 237	-5 234	-3 060
August	-2 264	13 091	10 413	2 300	8 113	2 678	-15 355	-12 345	-3 940	-2 949	-5 456	-3 010
September	-3 359	13 028	10 567	2 293	8 274	2 461	-16 387	-13 121	-4 369	-3 023	-5 729	-3 266
October	-2 535	13 572	10 789	2 251	8 538	2 783	-16 107	-12 918	-4 188	-3 087	-5 643	-3 189
November	-3 376	12 916	10 112	2 123	7 989	2 804	-16 292	-13 285	-4 277	-3 136	-5 872	-3 007
December	-2 036	13 653	10 768	2 154	8 614	2 885	-15 689	-12 508	-3 804	-3 010	-5 694	-3 181
2005												
January	-1 792	12 759	9 264	1 717	7 547	3 495	-14 551	-11 267	-3 717	-2 415	-5 135	-3 284
February	-749	13 253	9 410	2 024	7 386	3 843	-14 002	-11 274	-3 712	-2 478	-5 084	-2 728
March	-2 132	13 398	10 380	2 032	8 348	3 018	-15 530	-12 649	-3 701	-2 896	-6 052	-2 881
FINANCIAL YEAR TO DATE												
9 months ended March												
2004	-18 119	105 619	79 372	17 232	62 140	26 247	-123 738	-98 146	-32 180	-23 269	-42 697	-25 592
2005	-20 212	119 223	91 832	19 273	72 559	27 391	-139 435	-111 829	-35 699	-26 231	-49 899	-27 606

(a) For sign conventions, see paragraph 9 of the Explanatory Notes.

(b) For all time periods, estimates for sugar, sugar preparations and honey are included in Non-rural and other goods.

GOODS CREDITS: Original

							9 MONTHS ENDED MARCH		Change
	2001-02	2002-03	2003-04	Jan 2005	Feb 2005	Mar 2005	2004	2005	
	\$m	\$m	\$m	\$m	\$m	\$m	\$m	\$m	
Total goods credits	120 950	115 800	109 504	9 264	9 410	10 380	79 372	91 832	15.7
Rural goods									
Meat and meat preparations	6 246	5 655	5 758	361	539	628	4 048	5 050	24.8
Cereal grains and cereal preparations	6 481	4 487	5 094	499	463	365	3 340	4 194	25.6
Wool and sheepskins	3 687	3 545	2 778	139	231	246	1 983	2 089	5.3
Other rural	13 671	11 797	10 930	718	791	793	7 861	7 940	1.0
<i>Total rural goods(a)</i>	<i>30 085</i>	<i>25 484</i>	<i>24 560</i>	<i>1 717</i>	<i>2 024</i>	<i>2 032</i>	<i>17 232</i>	<i>19 273</i>	<i>11.8</i>
Non-rural goods									
Metal ores and minerals	14 774	14 523	14 888	1 456	1 241	1 643	10 643	13 421	26.1
Coal, coke and briquettes	13 430	11 987	11 001	1 357	1 242	1 249	7 569	11 462	51.4
Other mineral fuels	10 940	11 049	8 766	892	841	926	6 799	8 154	19.9
Metals (excl. gold)	9 650	8 711	7 759	753	621	733	5 515	6 378	15.6
Machinery	7 999	7 362	6 839	453	572	635	5 052	5 559	10.0
Transport equipment	5 686	6 273	5 155	217	356	426	3 904	3 487	-10.7
Other manufactures	13 758	13 485	13 276	895	1 095	1 192	9 822	10 337	5.2
Other non-rural(a)	7 009	8 234	9 286	811	819	950	6 744	7 973	18.2
<i>Total non-rural goods(a)</i>	<i>83 246</i>	<i>81 624</i>	<i>76 970</i>	<i>6 834</i>	<i>6 787</i>	<i>7 754</i>	<i>56 048</i>	<i>66 771</i>	<i>19.1</i>
Other goods									
<i>Total other goods(b)</i>	<i>7 619</i>	<i>8 692</i>	<i>7 974</i>	<i>713</i>	<i>599</i>	<i>594</i>	<i>6 092</i>	<i>5 788</i>	<i>-5.0</i>

(a) For all time periods, estimates for sugar, sugar preparations and honey are included in Other non-rural.

(b) Includes non-monetary gold.

GOODS DEBITS(a): Original

							9 MONTHS ENDED MARCH		Change
	2001-02	2002-03	2003-04	Jan 2005	Feb 2005	Mar 2005	2004	2005	
	\$m	\$m	\$m	\$m	\$m	\$m	\$m	\$m	
Total goods debits	-121 942	-134 278	-133 026	-11 267	-11 274	-12 649	-98 146	-111 829	13.9
Consumption goods									
Food and beverages, mainly for consumption	-4 687	-5 067	-5 167	-479	-421	-470	-3 902	-4 376	12.1
Household electrical items	-3 166	-3 657	-3 793	-244	-282	-273	-2 861	-3 142	9.8
Non-industrial transport equipment	-9 930	-11 302	-12 326	-1 150	-989	-1 069	-9 077	-9 477	4.4
Textiles, clothing and footwear	-4 849	-5 237	-5 078	-574	-571	-429	-3 885	-4 528	16.6
Toys, books and leisure goods	-3 494	-3 740	-3 593	-231	-251	-244	-2 745	-2 870	4.6
Consumption goods n.e.s.	-11 296	-12 225	-12 959	-1 039	-1 198	-1 216	-9 710	-11 306	16.4
<i>Total consumption goods</i>	<i>-37 422</i>	<i>-41 228</i>	<i>-42 916</i>	<i>-3 717</i>	<i>-3 712</i>	<i>-3 701</i>	<i>-32 180</i>	<i>-35 699</i>	<i>10.9</i>
Capital goods									
Machinery and industrial equipment	-9 502	-11 007	-11 064	-1 027	-1 041	-1 049	-8 202	-10 098	23.1
ADP equipment	-5 055	-4 908	-5 138	-369	-379	-528	-3 563	-4 068	14.2
Telecommunications equipment	-3 643	-3 619	-4 105	-293	-317	-367	-2 915	-3 460	18.7
Civil aircraft	-1 513	-3 887	-3 061	-1	-47	-138	-2 270	-1 450	-36.1
Industrial transport equipment n.e.s.	-3 613	-3 881	-4 144	-408	-331	-412	-2 913	-3 633	24.7
Capital goods n.e.s.	-3 882	-4 252	-4 606	-317	-363	-402	-3 406	-3 522	3.4
<i>Total capital goods</i>	<i>-27 208</i>	<i>-31 554</i>	<i>-32 118</i>	<i>-2 415</i>	<i>-2 478</i>	<i>-2 896</i>	<i>-23 269</i>	<i>-26 231</i>	<i>12.7</i>
Intermediate and other merchandise goods									
Food and beverages, mainly for industry	-577	-736	-625	-59	-51	-55	-474	-490	3.4
Primary industrial supplies n.e.s.	-1 117	-1 220	-1 079	-83	-70	-100	-812	-783	-3.6
Fuels and lubricants	-8 823	-10 393	-9 917	-956	-969	-1 394	-6 932	-10 475	51.1
Parts for transport equipment	-6 827	-7 258	-6 548	-555	-526	-632	-4 935	-5 184	5.0
Parts for ADP equipment	-2 159	-2 011	-1 812	-125	-120	-152	-1 341	-1 318	-1.7
Other parts for capital goods	-8 216	-8 605	-8 553	-697	-722	-819	-6 304	-7 140	13.3
Organic and inorganic chemicals	-3 447	-3 089	-3 048	-292	-332	-366	-2 210	-2 691	21.8
Paper and paperboard	-2 225	-2 326	-2 242	-187	-178	-194	-1 710	-1 773	3.7
Textile yarn and fabrics	-1 830	-1 839	-1 576	-114	-108	-107	-1 182	-1 116	-5.6
Iron and steel	-1 765	-1 960	-2 026	-266	-286	-291	-1 473	-2 121	44.0
Plastics	-2 182	-2 478	-2 177	-212	-201	-208	-1 623	-1 852	14.1
Processed industrial supplies n.e.s.	-11 441	-12 238	-12 029	-1 148	-1 115	-1 209	-8 822	-10 420	18.1
Other merchandise goods	-1 563	-1 710	-1 234	-70	-64	-68	-979	-736	-24.8
<i>Total intermediate and other merchandise goods</i>	<i>-52 172</i>	<i>-55 863</i>	<i>-52 866</i>	<i>-4 764</i>	<i>-4 742</i>	<i>-5 595</i>	<i>-38 797</i>	<i>-46 099</i>	<i>18.8</i>
Other goods									
<i>Total other goods(b)</i>	<i>-5 140</i>	<i>-5 633</i>	<i>-5 126</i>	<i>-371</i>	<i>-342</i>	<i>-457</i>	<i>-3 900</i>	<i>-3 800</i>	<i>-2.6</i>

(a) For sign conventions, see paragraph 9 of the Explanatory Notes.

(b) Includes non-monetary gold.

SERVICES (a)(b), Summary: Original

	9 MONTHS ENDED MARCH								
	2001-02	2002-03	2003-04	Jan	Feb	Mar	2004	2005	Change
	\$m	\$m	\$m	2005	2005	2005	\$m	\$m	%
Credits									
Freight	1 001	920	830	64	64	65	609	607	-0.3
Other transportation	6 664	6 538	6 772	706	677	683	5 093	5 735	12.6
Travel	15 645	15 452	17 108	1 940	2 323	1 479	13 628	13 975	2.5
Other services	8 940	9 583	9 270	785	779	791	6 917	7 074	2.3
Total services credits	32 250	32 493	33 980	3 495	3 843	3 018	26 247	27 391	4.4
Debits									
Freight	-5 626	-5 808	-6 056	-633	-582	-605	-4 434	-5 674	28.0
Other transportation	-5 150	-5 152	-5 578	-489	-410	-454	-4 075	-4 276	4.9
Travel	-10 918	-11 012	-12 136	-1 353	-929	-998	-9 104	-10 072	10.6
Other services	-10 937	-10 919	-10 465	-809	-807	-824	-7 979	-7 584	-5.0
Total services debits	-32 631	-32 891	-34 235	-3 284	-2 728	-2 881	-25 592	-27 606	7.9
Memorandum items:									
Tourism related service credits(c)	19 800	19 503	21 081	2 374	2 728	1 887	16 705	17 340	3.8
Tourism related service debits(c)	-15 577	-15 691	-17 258	-1 798	-1 295	-1 411	-12 850	-13 963	8.7

(a) For sign conventions, see paragraph 9 of the Explanatory Notes.

(b) For more detailed trade in services by commodity, see table 7.

(c) For a more detailed explanation of tourism related services, see paragraphs 15 and 16 of the Explanatory Notes.

SERVICES (a), Summary: **Seasonally Adjusted and Trend Estimates**

	Jun 2004	Jul 2004	Aug 2004	Sep 2004	Oct 2004	Nov 2004	Dec 2004	Jan 2005	Feb 2005	Mar 2005
	\$m	\$m	\$m	\$m	\$m	\$m	\$m	\$m	\$m	\$m

SEASONALLY ADJUSTED

Credits

Freight	73	71	69	69	68	65	66	66	66	67
Other transportation	595	599	601	589	602	615	628	653	662	677
Travel	1 431	1 444	1 435	1 415	1 378	1 445	1 438	1 521	1 549	1 549
Other services	761	759	757	765	800	795	804	810	824	840
Total services credits	2 860	2 873	2 862	2 838	2 848	2 920	2 936	3 050	3 101	3 133

Debits

Freight	-580	-594	-564	-623	-625	-652	-666	-708	-652	-590
Other transportation	-483	-444	-467	-484	-469	-480	-500	-500	-498	-487
Travel	-1 049	-1 055	-1 051	-1 081	-1 087	-1 107	-1 187	-1 148	-1 144	-1 115
Other services	-838	-828	-890	-826	-824	-818	-830	-838	-845	-854
Total services debits	-2 950	-2 921	-2 972	-3 014	-3 005	-3 057	-3 183	-3 194	-3 139	-3 046

Memorandum items:

Tourism related service credits(b)	1 774	1 801	1 789	1 754	1 656	1 793	1 807	1 912	1 943	1 913
Tourism related service debits(b)	-1 494	-1 434	-1 478	-1 530	-1 513	-1 537	-1 652	-1 611	-1 596	-1 504

TREND ESTIMATES

Credits

Freight	72	72	70	69	67	67	66	66	66	66
Other transportation	595	596	597	599	606	617	631	646	660	672
Travel	1 424	1 420	1 416	1 415	1 422	1 439	1 465	1 495	1 524	1 550
Other services	764	764	766	773	783	795	805	815	824	831
Total services credits	2 855	2 852	2 849	2 856	2 878	2 918	2 967	3 022	3 074	3 119

Debits

Freight	-564	-580	-596	-616	-635	-650	-659	-661	-656	-645
Other transportation	-475	-470	-468	-471	-477	-485	-491	-494	-496	-497
Travel	-1 049	-1 053	-1 063	-1 080	-1 101	-1 121	-1 135	-1 144	-1 148	-1 147
Other services	-846	-845	-842	-837	-833	-830	-831	-835	-840	-848
Total services debits	-2 934	-2 948	-2 969	-3 004	-3 046	-3 086	-3 116	-3 134	-3 140	-3 137

Memorandum items:

Tourism related service credits(b)	1 766	1 760	1 752	1 749	1 759	1 784	1 823	1 865	1 904	1 939
Tourism related service debits(b)	-1 478	-1 476	-1 485	-1 508	-1 538	-1 566	-1 583	-1 589	-1 587	-1 578

(a) For sign conventions, see paragraph 9 of the Explanatory Notes.

(b) For a more detailed explanation of tourism related services, see paragraphs 15 and 16 of the Explanatory Notes.

	CREDITS				DEBITS			
	<i>Jun Qtr</i>	<i>Sep Qtr</i>	<i>Dec Qtr</i>	<i>Mar Qtr</i>	<i>Jun Qtr</i>	<i>Sep Qtr</i>	<i>Dec Qtr</i>	<i>Mar Qtr</i>
	2004	2004	2004	2005	2004	2004	2004	2005
	\$m	\$m	\$m	\$m	\$m	\$m	\$m	\$m
Services	7 733	8 563	8 472	10 356	-8 643	-9 336	-9 377	-8 893
Transportation services								
Passenger(c)	1 679	1 768	1 901	2 066	-1 297	-1 293	-1 190	-1 134
Freight	221	210	204	193	-1 622	-1 834	-2 020	-1 820
Other(c)	np	np	np	np	-206	-217	-223	-219
<i>Total transportation services</i>	<i>1 900</i>	<i>1 978</i>	<i>2 105</i>	<i>2 259</i>	<i>-3 125</i>	<i>-3 344</i>	<i>-3 433</i>	<i>-3 173</i>
Travel services								
Business	302	285	287	313	-700	-763	-715	-795
Personal								
Education-related	885	1 614	693	2 554	-142	-234	-152	-172
Other	2 293	2 453	2 901	2 875	-2 190	-2 469	-2 459	-2 313
Total personal	3 178	4 067	3 594	5 429	-2 332	-2 703	-2 611	-2 485
<i>Total travel services</i>	<i>3 480</i>	<i>4 352</i>	<i>3 881</i>	<i>5 742</i>	<i>-3 032</i>	<i>-3 466</i>	<i>-3 326</i>	<i>-3 280</i>
Communication services(d)	183	208	202	202	-205	-189	-187	-183
Construction services	27	21	20	19	—	—	—	—
Insurance services	173	171	171	171	-220	-218	-218	-218
Financial services	248	251	251	251	-146	-146	-146	-146
Computer and information services	297	289	320	287	-256	-266	-286	-201
Royalties and license fees	172	138	183	160	-456	-485	-535	-480
Other business services								
Merchanting and other trade-related	206	156	182	177	-55	-56	-58	-43
Operational leasing	5	5	4	4	-192	-186	-173	-220
Miscellaneous business, professional and technical								
Legal, accounting, management consulting and public relations	128	115	113	98	-76	-84	-79	-70
Advertising, market research and public opinion polling	22	22	30	19	-53	-26	-27	-28
Research and development	88	77	105	87	-42	-37	-41	-46
Architectural, engineering and other technical services	127	97	120	138	-97	-104	-91	-68
Agriculture, mining and on-site processing	31	30	30	26	-22	-24	-23	-25
Services between affiliated enterprises n.i.e.	245	245	340	261	-209	-180	-266	-202
Other	72	92	105	89	-70	-74	-81	-62
Total miscellaneous business, professional and technical	713	678	843	718	-569	-529	-608	-501
<i>Total other business services</i>	<i>924</i>	<i>839</i>	<i>1 029</i>	<i>899</i>	<i>-816</i>	<i>-771</i>	<i>-839</i>	<i>-764</i>
Personal, cultural and recreational services								
Audiovisual and related services	26	27	25	55	-152	-247	-160	-199
Other personal, cultural and recreational services	72	78	78	87	-25	-30	-57	-69
<i>Total other personal, cultural and recreational services</i>	<i>98</i>	<i>105</i>	<i>103</i>	<i>142</i>	<i>-177</i>	<i>-277</i>	<i>-217</i>	<i>-268</i>
Government services n.i.e.	231	211	207	224	-210	-174	-190	-180
Memorandum items:								
Tourism related services(e)	4 376	5 365	4 986	6 989	-4 408	-4 849	-4 610	-4 504

— nil or rounded to zero (including null cells)

np not available for publication but included in totals where applicable, unless otherwise indicated

(a) For sign conventions, see paragraph 9 of Explanatory Notes.

(b) For more information see paragraphs 13 and 14 of the Explanatory Notes.

(c) Passenger transportation credits include other transportation services credits.

(d) Communications services includes other services n.i.e..

(e) For a more detailed explanation of tourism related services, see paragraphs 15 and 16 of the Explanatory Notes.

	Jan 2005	Feb 2005	Mar 2005	Per cent of total merchandise exports (a)	9 MONTHS ENDED MARCH	
					2004	2005
					\$m	\$m
MAJOR COMMODITIES						
011 Meat of bovine animals	227	367	433	4.2	2 727	3 580
041 Wheat	330	302	235	2.3	2 193	2 807
268 Wool and other animal hair	124	200	220	2.1	1 779	1 838
281 Iron ore and concentrates	565	474	590	5.7	3 765	5 089
285 Aluminium ore and concentrates	294	326	374	3.6	2 682	3 185
321 Coal, not agglomerated	1 344	1 240	1 245	12.1	7 523	11 411
333 Crude petroleum oils	398	401	455	4.4	3 641	4 064
334 Refined petroleum oils	188	205	245	2.4	1 502	1 794
343 Natural gas	285	215	262	2.5	1 654	2 349
684 Aluminium	340	324	252	2.4	2 782	2 976
781 Passenger motor vehicles	79	228	250	2.4	2 182	1 975
971 Gold, non-monetary	535	447	368	3.6	4 271	4 211
SECTION AND DIVISION OF THE SITC						
0 Food and live animals(b)						
00 Live animals other than fish, crustaceans, molluscs and aquatic invertebrates	70	62	55	0.5	629	606
01 Meat and meat preparations	361	539	628	6.1	4 048	5 049
02 Dairy products and birds' eggs	172	185	201	2.0	1 549	1 784
03 Fish (not marine mammals), crustaceans, molluscs and aquatic invertebrates, and preparations thereof(b)	100	81	93	0.9	989	906
04 Cereals and cereal preparations(b)	499	463	365	3.5	3 340	4 194
05 Vegetables and fruit	94	88	95	0.9	904	936
06 Sugars, sugar preparations and honey(b)	15	13	18	0.2	137	157
07 Coffee, tea, cocoa, spices, and manufactures thereof	17	18	19	0.2	218	210
08 Feeding stuff for animals (excl. unmilled cereals)(b)	48	56	62	0.6	676	625
09 Miscellaneous edible products and preparations	28	35	39	0.4	345	354
<i>Total food and live animals</i>	<i>1 405</i>	<i>1 539</i>	<i>1 575</i>	<i>15.3</i>	<i>12 834</i>	<i>14 822</i>
1 Beverages and tobacco						
11 Beverages	190	191	238	2.3	1 907	2 110
12 Tobacco and tobacco manufactures	6	4	5	0.1	62	82
<i>Total beverages and tobacco</i>	<i>196</i>	<i>195</i>	<i>244</i>	<i>2.4</i>	<i>1 969</i>	<i>2 192</i>
2 Crude materials, inedible, except fuels(b)						
21 Hides, skins and furskins, raw(b)	40	53	51	0.5	466	507
22 Oil seeds and oleaginous fruits	27	69	36	0.4	384	371
23 Crude rubber (incl. synthetic and reclaimed)	1	1	1	—	11	9
24 Cork and wood	57	89	85	0.8	721	763
25 Pulp and waste paper	9	8	10	0.1	42	72
26 Textile fibres and their wastes (not manufactured into yarn or fabric)(b)	148	227	235	2.3	2 456	2 366
27 Crude fertilisers (excl. those of Division 56) and crude minerals (excl. coal, petroleum and precious stones)	36	41	43	0.4	319	338
28 Metalliferous ores and metal scrap(b)	1 420	1 201	1 602	15.5	10 321	13 090
29 Crude animal and vegetable materials, n.e.s.	19	22	22	0.2	171	219
<i>Total crude materials, inedible, except fuels</i>	<i>1 757</i>	<i>1 711</i>	<i>2 085</i>	<i>20.2</i>	<i>14 892</i>	<i>17 735</i>
3 Mineral fuels, lubricants and related materials						
32 Coal, coke and briquettes	1 357	1 244	1 250	12.1	7 570	11 471
33 Petroleum, petroleum products and related materials	586	607	702	6.8	5 152	5 869
34 Gas, natural and manufactured	380	293	305	3.0	2 153	2 958
<i>Total mineral fuels, lubricants and related materials</i>	<i>2 324</i>	<i>2 144</i>	<i>2 258</i>	<i>21.9</i>	<i>14 875</i>	<i>20 299</i>

— nil or rounded to zero (including null cells)

(a) Per cent of total merchandise exports is calculated for the most recent month.

(b) Excludes exports commodities subject to a confidentiality restriction. These are included in Division 98.

	Jan 2005	Feb 2005	Mar 2005	Per cent of total merchandise exports (a)	9 MONTHS ENDED MARCH	
					2004	2005
					\$m	\$m
SECTION AND DIVISION OF THE SITC						
4	Animal and vegetable oils, fats and waxes(b)					
41	13	18	21	0.2	182	164
42	6	4	5	—	38	44
43	Fats and oils (processed), waxes and inedible mixtures or preparations, of animal or vegetable origin, n.e.s.					
	5	5	5	—	41	48
	24	26	31	0.3	261	256
5	Chemicals and related products, n.e.s.(b)					
51	8	9	9	0.1	84	99
52	49	41	40	0.4	392	376
53	41	45	57	0.5	444	460
54	177	228	245	2.4	1 772	2 028
55	Essential oils and resinoids and perfume materials; toilet, polishing and cleansing preparations					
	27	31	40	0.4	314	315
56	5	8	4	—	128	120
57	20	28	27	0.3	148	200
58	18	25	27	0.3	188	221
59	43	48	48	0.5	438	457
	388	464	497	4.8	3 909	4 276
6	Manufactured goods classified chiefly by material(b)					
61	25	29	39	0.4	359	339
62	11	11	17	0.2	105	118
63	18	19	24	0.2	152	179
64	Paper, paperboard, and articles of paper pulp, of paper or of paperboard					
	54	65	63	0.6	541	539
65	22	31	38	0.4	341	326
66	66	81	68	0.7	637	666
67	51	47	49	0.5	673	521
68	702	574	684	6.6	4 843	5 857
69	59	61	72	0.7	551	616
	1 007	918	1 054	10.2	8 202	9 161
7	Machinery and transport equipment(b)					
71	52	82	85	0.8	626	746
72	76	85	114	1.1	831	897
73	11	12	15	0.1	108	116
74	General industrial machinery and equipment, n.e.s. and machine parts, n.e.s.(b)					
	75	104	117	1.1	884	1 045
75	78	87	100	1.0	916	849
76	Telecommunications and sound recording and reproducing apparatus and equipment					
	66	72	75	0.7	568	700
77	Electrical machinery, apparatus, appliances, parts (incl. non-electrical counterparts of electrical domestic equipment)					
	90	126	127	1.2	1 090	1 190
78	149	309	341	3.3	3 128	2 827
79	68	47	85	0.8	776	660
	665	923	1 058	10.3	8 928	9 029

— nil or rounded to zero (including null cells)

(a) Per cent of total merchandise exports is calculated for the most recent month.

(b) Excludes exports commodities subject to a confidentiality restriction. These are included in Division 98.

				Per cent of total merchandise exports (a)	9 MONTHS ENDED MARCH	
	Jan 2005	Feb 2005	Mar 2005		2004	2005
	\$m	\$m	\$m		\$m	\$m
SECTION AND DIVISION OF THE SITC						
8	Miscellaneous manufactured articles(b)					
81	Prefabricated buildings; sanitary, plumbing, heating and lighting fixtures and fittings, n.e.s.	6	9	11	0.1	72 80
82	Furniture, parts thereof; bedding, mattresses, mattress supports, cushions and similar stuffed furnishings	7	11	13	0.1	106 100
83	Travel goods, handbags and similar containers	1	2	2	—	16 17
84	Articles of apparel and clothing accessories	15	22	28	0.3	225 213
85	Footwear(b)	2	3	5	—	35 34
87	Professional, scientific and controlling instruments and apparatus, n.e.s.	82	115	120	1.2	893 1 013
88	Photographic apparatus, equipment and supplies and optical goods, n.e.s.; watches and clocks	21	26	30	0.3	416 364
89	Miscellaneous manufactured articles, n.e.s.	113	142	160	1.6	1 401 1 420
	<i>Total miscellaneous manufactured articles</i>	248	331	368	3.6	3 164 3 241
9	Commodities and transactions not classified elsewhere in the SITC(c)(d)					
93	Special transactions and commodities not classified according to kind	139	154	208	2.0	1 751 1 399
95	Gold coin whether or not legal tender, and other coin being legal tender	16	6	9	0.1	72 94
96	Coin (excl. gold coin), not being legal tender	—	—	—	—	— 1
97	Gold, non-monetary (excl. gold ores and concentrates)	535	447	368	3.6	4 271 4 211
98	Combined confidential items excl. some of SITC 280 (exports only) and some of SITCs 510 and 520 (imports only)(c)(d)	478	574	552	5.4	3 988 4 496
	<i>Total commodities and transactions not classified elsewhere in the SITC</i>	1 168	1 180	1 138	11.0	10 082 10 201
	Total Merchandise Exports	9 182	9 430	10 306	100.0	79 114 91 211
	Balance of Payments Adjustments	82	-20	74	..	258 621
	Goods Credits (exports) on a Balance of Payments Basis	9 264	9 410	10 380	..	79 372 91 832

.. not applicable

— nil or rounded to zero (including null cells)

(a) Per cent of total merchandise exports is calculated for the most recent month.

(b) Excludes exports commodities subject to a confidentiality restriction. These are included in Division 98.

(c) Includes exports commodities subject to a confidentiality restriction.

(d) Includes small value export entries which can not yet be allocated by commodity.

INTERNATIONAL MERCHANDISE IMPORTS, By commodity

				Per cent of total merchandise imports(a)	9 MONTHS ENDED MARCH	
	Jan	Feb	Mar		2004	2005
	2005	2005	2005			
	\$m	\$m	\$m	%	\$m	\$m
MAJOR COMMODITIES						
333 Crude petroleum oils	545	720	1 044	8.3	4 457	7 117
334 Refined petroleum oils	405	224	352	2.8	2 271	3 208
542 Medicaments	405	541	549	4.4	3 596	4 295
641 Paper and paperboard	170	162	177	1.4	1 543	1 580
752 Automatic data processing machines	372	382	531	4.2	3 546	4 090
759 Parts and accessories of office machines	150	149	179	1.4	1 600	1 583
764 Telecommunications equipment	341	359	424	3.4	3 075	3 784
781 Passenger motor vehicles	1 019	895	967	7.7	8 239	8 380
782 Motor vehicles for the transport of goods	326	280	343	2.7	2 202	2 896
784 Parts and accessories of motor vehicles	181	178	192	1.5	1 566	1 702
792 Aircraft and associated equipment	65	81	260	2.1	3 028	2 509
971 Gold, non-monetary	186	163	200	1.6	1 962	1 717

SECTION AND DIVISION OF THE SITC

0	Food and live animals					
00	Live animals other than fish, crustaceans, molluscs and aquatic invertebrates	7	25	10	0.1	54 72
01	Meat and meat preparations	29	30	39	0.3	190 254
02	Dairy products and birds' eggs	31	31	33	0.3	230 277
03	Fish (not marine mammals), crustaceans, molluscs and aquatic invertebrates, and preparations thereof	76	77	83	0.7	693 741
04	Cereals and cereal preparations	31	30	31	0.2	274 313
05	Vegetables and fruit	92	80	86	0.7	733 835
06	Sugars, sugar preparations and honey	12	13	15	0.1	135 136
07	Coffee, tea, cocoa, spices, and manufactures thereof	58	51	55	0.4	485 534
08	Feeding stuff for animals (excl. unmilled cereals)	19	13	29	0.2	203 208
09	Miscellaneous edible products and preparations	114	88	77	0.6	785 846
	<i>Total food and live animals</i>	469	438	458	3.6	3 782 4 218
1	Beverages and tobacco					
11	Beverages	62	51	69	0.5	568 645
12	Tobacco and tobacco manufactures	16	9	13	0.1	135 128
	<i>Total beverages and tobacco</i>	77	60	82	0.6	703 773
2	Crude materials, inedible, except fuels					
21	Hides, skins and furskins, raw	—	—	—	—	2 2
22	Oil seeds and oleaginous fruits	9	7	3	—	59 42
23	Crude rubber (incl. synthetic and reclaimed)	13	13	13	0.1	94 110
24	Cork and wood	50	46	54	0.4	448 470
25	Pulp and waste paper	17	19	19	0.1	173 169
26	Textile fibres and their wastes (not manufactured into yarn or fabric)	12	12	12	0.1	112 117
27	Crude fertilisers (excl. those of Division 56) and crude minerals (excl. coal, petroleum and precious stones)	12	10	17	0.1	150 128
28	Metalliferous ores and metal scrap	26	16	28	0.2	219 208
29	Crude animal and vegetable materials, n.e.s.	26	23	22	0.2	197 208
	<i>Total crude materials, inedible, except fuels</i>	165	148	168	1.3	1 455 1 453
3	Mineral fuels, lubricants and related materials(b)					
32	Coal, coke and briquettes	3	—	1	—	12 15
33	Petroleum, petroleum products and related materials(b)	975	986	1 431	11.4	6 935 10 619
34	Gas, natural and manufactured	—	21	—	—	127 94
	<i>Total mineral fuels, lubricants and related materials</i>	978	1 007	1 432	11.4	7 075 10 727

— nil or rounded to zero (including null cells)

(a) Per cent of total merchandise imports is calculated for the most recent month.

(b) Excludes imports commodities subject to a confidentiality restriction. These are included in Division 98.

				Per cent of total merchandise imports(a)	9 MONTHS ENDED MARCH		
	Jan	Feb	Mar		2004	2005	
	2005	2005	2005				
	\$m	\$m	\$m	%	\$m	\$m	
SECTION AND DIVISION OF THE SITC							
4	Animal and vegetable oils, fats and waxes						
41	Animal oils and fats	1	1	1	—	20	12
42	Fixed vegetable fats and oils, crude, refined or fractionated	23	16	34	0.3	223	239
43	Fats and oils (processed), waxes and inedible mixtures or preparations, of animal or vegetable origin, n.e.s.	4	4	5	—	32	35
	<i>Total animal and vegetable oils, fats and waxes</i>	28	22	40	0.3	274	286
5	Chemicals and related products, n.e.s.(b)						
51	Organic chemicals	209	247	284	2.3	1 702	2 047
52	Inorganic chemicals(b)	83	86	82	0.7	507	647
53	Dyeing, tanning and colouring materials	45	39	46	0.4	386	409
54	Medicinal and pharmaceutical products	472	612	670	5.3	4 376	5 207
55	Essential oils and resinoids and perfume materials; toilet, polishing and cleansing preparations	109	99	115	0.9	919	1 030
56	Fertilisers (excl. crude)	104	103	106	0.8	475	693
57	Plastics in primary forms	114	110	117	0.9	864	990
58	Plastics in non-primary forms	98	91	91	0.7	759	861
59	Chemical materials and products, n.e.s.	121	121	140	1.1	1 053	1 146
	<i>Total chemicals and related products, n.e.s.</i>	1 354	1 507	1 652	13.1	11 041	13 031
6	Manufactured goods classified chiefly by material(b)						
61	Leather, leather manufactures, and dressed furskins, n.e.s.	10	12	13	0.1	123	121
62	Rubber manufactures, n.e.s.(b)	157	144	165	1.3	1 285	1 400
63	Cork and wood manufactures (excl. furniture)	58	59	61	0.5	489	505
64	Paper, paperboard, and articles of paper pulp, of paper or of paperboard(b)	205	198	214	1.7	1 867	1 947
65	Textile yarn, fabrics, made-up articles n.e.s. and related products	192	186	179	1.4	1 838	1 864
66	Non-metallic mineral manufactures, n.e.s.	160	161	182	1.4	1 543	1 618
67	Iron and steel(b)	266	286	291	2.3	1 473	2 297
68	Non-ferrous metals(b)	80	74	119	0.9	746	764
69	Manufactures of metals, n.e.s.(b)	276	294	285	2.3	2 367	2 800
	<i>Total manufactured goods classified chiefly by material</i>	1 405	1 414	1 509	12.0	11 731	13 315
7	Machinery and transport equipment(b)						
71	Power generating machinery and equipment	240	269	345	2.7	2 238	2 571
72	Machinery specialised for particular industries	478	483	482	3.8	3 738	4 397
73	Metal working machinery	44	74	50	0.4	463	520
74	General industrial machinery and equipment, n.e.s. and machine parts, n.e.s.	637	580	658	5.2	5 263	6 273
75	Office machines and automatic data processing machines	563	572	757	6.0	5 482	6 123
76	Telecommunications and sound recording and reproducing apparatus and equipment	513	570	638	5.1	5 411	6 541
77	Electrical machinery, apparatus, appliances, parts (incl. non-electrical counterparts of electrical domestic equipment)(b)	628	569	631	5.0	5 118	5 833
78	Road vehicles (incl. air-cushion vehicles)	1 660	1 469	1 630	12.9	13 043	14 223
79	Transport equipment (excl. road vehicles)	147	117	342	2.7	3 659	3 065
	<i>Total machinery and transport equipment</i>	4 909	4 702	5 532	43.9	44 416	49 548

— nil or rounded to zero (including null cells)

(a) Per cent of total merchandise imports is calculated for the most recent month.

(b) Excludes imports commodities subject to a confidentiality restriction. These are included in Division 98.

				Per cent of total merchandise imports(a)	9 MONTHS ENDED MARCH	
	Jan	Feb	Mar		
	2005	2005	2005		2004	2005
	\$m	\$m	\$m	%	\$m	\$m
SECTION AND DIVISION OF THE SITC						
8	Miscellaneous manufactured articles(b)					
81	Prefabricated buildings; sanitary, plumbing, heating and lighting fixtures and fittings, n.e.s.					
	38	39	37	0.3	348	394
82	Furniture, parts thereof; bedding, mattresses, mattress supports, cushions and similar stuffed furnishings					
	139	134	118	0.9	1 197	1 478
83	Travel goods, handbags and similar containers					
	41	43	32	0.3	369	439
84	Articles of apparel and clothing accessories					
	388	391	289	2.3	2 568	2 996
85	Footwear					
	113	109	74	0.6	710	834
87	Professional, scientific and controlling instruments and apparatus, n.e.s.					
	254	281	313	2.5	2 304	2 670
88	Photographic apparatus, equipment and supplies and optical goods, n.e.s.; watches and clocks(b)					
	96	110	101	0.8	1 001	1 047
89	Miscellaneous manufactured articles, n.e.s.					
	493	527	549	4.4	5 679	5 838
	<i>Total miscellaneous manufactured articles</i>					
	1 562	1 633	1 512	12.0	14 176	15 696
9	Commodities and transactions not classified elsewhere in the SITC(c)					
93	Special transactions and commodities not classified according to kind					
	3	2	4	—	21	25
95	Gold coin whether or not legal tender, and other coin being legal tender					
	1	1	—	—	4	5
96	Coin (excl. gold coin), not being legal tender					
	—	—	—	—	1	18
97	Gold, non-monetary (excl. gold ores and concentrates)					
	186	163	200	1.6	1 962	1 717
98	Combined confidential items excl. some of SITC 280 (exports only) and some of SITCs 510 and 520 (imports only)(c)					
	14	15	14	0.1	185	148
	<i>Total commodities and transactions not classified elsewhere in the SITC</i>					
	203	181	218	1.7	2 173	1 914
Total Merchandise Imports						
	11 150	11 112	12 603	100.0	96 825	110 962
Balance of Payments Adjustment						
	117	162	46	. .	1 321	867
Goods Debits (imports) on a Balance of Payments Basis						
	11 267	11 274	12 649	. .	98 146	111 829

. . not applicable

— nil or rounded to zero (including null cells)

(a) Per cent of total merchandise imports is calculated for the most recent month.

(b) Excludes imports commodities subject to a confidentiality restriction. These are included in Division 98.

(c) Includes imports commodities subject to a confidentiality restriction.

	EXPORTS				IMPORTS				BALANCE OF MERCHANDISE TRADE	
	2003-04	March 2005	9 months ended March 2004	9 months ended March 2005	2003-04	March 2005	9 months ended March 2004	9 months ended March 2005	2003-04	9 months ended March 2005
	\$m	\$m	\$m	\$m	\$m	\$m	\$m	\$m	\$m	\$m
Belgium(b)	676	54	509	606	1 237	102	893	843	-561	-237
Brazil	512	44	354	413	494	52	384	457	18	-44
Canada	1 828	217	1 294	1 427	1 818	209	1 342	1 436	10	-8
China	9 935	1 152	7 022	8 752	15 338	1 383	11 375	14 996	-5 403	-6 244
Denmark	167	12	128	122	856	66	637	785	-690	-662
Egypt(c)	649	10	421	210	36	1	30	11	614	199
Fiji	430	31	330	300	210	17	155	167	220	133
Finland	575	43	431	410	651	84	472	603	-76	-193
France	939	68	676	724	3 816	320	2 856	3 121	-2 877	-2 397
Germany	1 309	123	950	1 006	7 985	741	6 022	6 444	-6 676	-5 438
Hong Kong (SAR of China)	2 754	220	2 084	2 005	1 202	79	891	926	1 552	1 079
India	4 865	436	3 413	4 023	1 000	107	750	932	3 865	3 091
Indonesia	2 984	286	2 047	2 532	3 765	315	2 869	2 647	-781	-115
Iran	125	9	108	114	43	3	35	17	82	97
Iraq	315	21	209	382	—	—	—	6	315	376
Ireland	172	12	126	147	1 686	194	1 213	1 426	-1 514	-1 279
Israel	160	12	133	118	470	59	348	437	-310	-319
Italy	1 375	153	1 040	1 129	4 215	399	3 068	3 460	-2 840	-2 331
Japan	19 821	1 902	14 149	17 587	16 101	1 362	11 953	12 847	3 721	4 740
Korea, Republic of	8 490	658	6 307	6 901	4 877	379	3 613	3 717	3 613	3 184
Kuwait	580	37	446	349	110	20	74	97	470	252
Malaysia	2 224	250	1 530	1 944	4 707	597	3 260	4 336	-2 483	-2 392
Mexico	341	62	280	522	603	77	441	565	-262	-43
Netherlands	1 368	169	1 010	1 245	1 197	103	886	964	171	281
New Zealand	8 094	747	6 050	6 953	5 056	472	3 790	3 991	3 038	2 962
Pakistan	438	24	365	426	161	14	121	114	277	312
Papua New Guinea	809	155	601	827	1 422	99	1 022	1 217	-613	-390
Philippines	938	77	662	677	762	45	597	517	175	160
Saudi Arabia	1 992	157	1 448	1 351	757	153	572	867	1 235	485
Singapore	3 061	285	2 164	2 418	5 112	658	3 617	5 053	-2 051	-2 634
South Africa	1 427	122	990	1 162	1 246	104	925	925	182	237
Spain	659	68	474	545	1 103	96	805	1 015	-444	-469
Sweden	228	12	144	175	1 739	176	1 283	1 418	-1 511	-1 244
Switzerland	181	12	132	157	1 190	145	886	1 104	-1 009	-947
Taiwan	3 705	489	2 672	3 442	3 396	245	2 485	2 740	308	702
Thailand	2 463	363	1 723	2 934	3 669	413	2 716	3 026	-1 206	-92
Turkey	277	15	215	225	262	30	185	278	16	-53
United Arab Emirates	1 185	103	892	979	742	33	562	738	443	241
United Kingdom	5 147	330	4 065	3 774	5 429	506	4 040	4 387	-282	-613
United States of America	9 481	793	6 859	6 925	19 929	1 937	14 744	15 791	-10 448	-8 866
Viet Nam	512	66	328	519	2 019	323	1 539	2 366	-1 506	-1 847
Other Countries(d)	5 858	506	4 333	4 754	4 587	484	3 367	4 179	1 271	575
Total	109 049	10 306	79 114	91 211	130 997	12 603	96 825	110 962	-21 947	-19 750
APEC	77 838	7 769	56 065	66 723	91 075	8 739	67 201	77 325	-13 237	-10 602
ASEAN	12 273	1 343	8 519	11 133	20 551	2 413	14 955	18 541	-8 278	-7 408
Developing Countries	52 823	5 115	38 042	44 608	52 071	5 271	38 330	47 349	752	-2 741
Least Developed Countries	1 183	104	859	1 138	213	16	156	171	970	967
European Union(e)	12 951	1 072	9 800	10 123	31 500	2 950	23 346	25 986	-18 549	-15 863
OECD	61 426	5 482	45 058	50 832	81 841	7 607	60 683	66 103	-20 415	-15 271

— nil or rounded to zero (including null cells)

(a) See AusStats for details of all countries.

(b) Prior to July 2003, Belgium and Luxembourg were combined.

Belgium-Luxembourg is included in 'Other Countries' up to and including June 2003.

(c) Exports of Alumina to Egypt are excluded from its country total and included in the 'Other countries' category.

(d) Includes small value export entries which can not yet be allocated by country.

(e) From July 2004, European Union includes 25 member countries.

	2003-04	Mar 2005	9 MONTHS ENDED MARCH	
			2004	2005
	\$m	\$m	\$m	\$m
EXPORTS (a)				
New South Wales	19 091	1 992	13 489	16 868
Victoria	18 012	1 458	12 984	13 751
Queensland	20 128	2 029	14 232	18 197
South Australia	7 608	698	5 601	5 773
Western Australia	32 302	3 077	23 877	27 585
Tasmania	2 317	203	1 683	1 879
Northern Territory	1 883	149	1 423	1 631
Australian Capital Territory	1	—	1	—
State not available for publication(b)(c)	344	40	248	308
Re-exports	7 362	661	5 576	5 218
Total exports	109 049	10 306	79 114	91 211
IMPORTS				
New South Wales	53 763	5 184	39 666	44 894
Victoria	40 727	3 707	30 300	33 754
Queensland	18 079	1 723	13 181	15 943
South Australia	5 163	450	3 837	4 254
Western Australia	11 690	1 349	8 739	10 300
Tasmania	669	37	557	470
Northern Territory	899	131	541	1 323
Australian Capital Territory	7	21	4	24
Total imports	130 997	12 603	96 825	110 962

— nil or rounded to zero (including null cells)

(a) State in which the final stage of production or manufacture occurs.

(b) Includes exports which can not yet be allocated by state. These shipments will be appropriately classified as more details become available.

(c) Exports of Alumina to Bahrain, Egypt and Iceland are excluded from the state totals and included in 'State not available for publication' category.

PERIOD AVERAGE EXCHANGE RATES(a): Per Australian dollar

<i>Period</i>	<i>United States dollar</i>	<i>United Kingdom pound</i>	<i>euro</i>	<i>Japanese yen</i>	<i>Trade-weighted index of value of the \$A(b)</i>
FINANCIAL YEAR					
2001-02	0.5239	0.3632	0.5850	66.10	50.7
2002-03	0.5848	0.3685	0.5577	70.01	53.5
2003-04	0.7137	0.4102	0.5981	78.91	61.5
MONTHS					
2004					
January	0.7695	0.4227	0.6101	81.89	64.8
February	0.7777	0.4165	0.6152	82.84	65.2
March	0.7498	0.4100	0.6110	81.45	63.6
April	0.7442	0.4121	0.6201	79.98	63.3
May	0.7054	0.3948	0.5874	79.01	60.9
June	0.6942	0.3794	0.5714	75.90	59.5
July	0.7164	0.3887	0.5835	78.29	61.1
August	0.7104	0.3903	0.5828	78.37	60.8
September	0.7013	0.3912	0.5743	77.20	59.9
October	0.7331	0.4057	0.5868	79.81	62.0
November	0.7689	0.4139	0.5925	80.61	63.7
December	0.7678	0.3981	0.5735	79.70	62.7
2005					
January	0.7647	0.4071	0.5830	78.98	62.7
February	0.7807	0.4139	0.5999	81.92	64.1
March	0.7859	0.4119	0.5948	82.62	64.2

(a) These exchange rates and the trade-weighted index are derived using rates provided by the Reserve Bank of Australia in respect of each trading day.

(b) May 1970=100. The trade-weighted index is reweighted annually (on 1 October) and on special occasions if required.

EXPLANATORY NOTES

INTRODUCTION

1 This publication presents preliminary estimates of Australia's international trade in goods and services on a balance of payments basis and merchandise import and export statistics on a recorded trade basis.

2 Merchandise trade statistics on a recorded trade basis are compiled from information submitted by exporters and importers or their agents to the Australian Customs Service (ACS). Adjustments for coverage, timing and valuation are made to recorded trade data to convert them to a balance of payments basis. The main source for services data is the quarterly Survey of International Trade in Services.

3 More comprehensive quarterly estimates of Australia's trade in goods and services, together with comprehensive details of Australia's balance of payments are included in the quarterly publication, *Balance of Payments and International Investment Position, Australia* (cat. no. 5302.0). Detailed monthly statistics on merchandise trade are available on AusStats or by subscription to tailored services.

CONCEPTS, SOURCES AND METHODS

4 The conceptual framework used in compiling Australia's merchandise trade statistics can be found in *International Merchandise Trade, Australia: Concepts, Sources and Methods, 2001* (cat. no. 5489.0).

5 The conceptual framework used in compiling Australia's balance of payments statistics is based on the Fifth Edition of the International Monetary Fund's *Balance of Payments Manual* (BPM5,1993). Descriptions of the underlying concepts and structure of the balance of payments and the sources, methods and terms used in compiling the estimates are presented in *Balance of Payments and International Investment Position, Australia: Concepts, Sources and Methods, 1998* (cat. no. 5331.0). To bring merchandise trade statistics on a recorded trade basis to a balance of payments basis, timing adjustments are made to ensure that the transaction is recorded in the period in which ownership changed, rather than in the period in which the transaction was recorded by ACS. Adjustments are also made to imports to take account of distortions which arise when significant changes occur in the volume of import entries lodged but not yet processed by ACS in a given month. Chapter 6 of cat. no. 5331.0 provides more detail on the relationship between statistics on international merchandise trade on a recorded trade basis and on a balance of payments basis.

6 Both of the Concepts, Sources and Methods publications are available for free from the ABS web site, see <<http://www.abs.gov.au>> – select *About Statistics* then *Concepts & Classifications*.

SEASONAL ADJUSTMENT

7 Monthly original estimates are volatile, being subject to calendar-related and large irregular influences. Seasonally adjusted estimates are derived by estimating and removing systematic calendar related effects, such as seasonal and trading day influences, from the original series. Trading day effects are removed from the original estimates prior to the seasonal adjustment process. Seasonal adjustment does not aim to remove the irregular or non-seasonal influences which may be present in any particular month. These irregular influences may reflect both random economic events and difficulties of statistical recording. The estimates of international trade in goods and services on a balance of payments basis are seasonally adjusted. The merchandise exports and imports statistics on a recorded trade basis are not.

TREND ESTIMATES

8 The month-to-month movements of the seasonally adjusted estimates may not be reliable indicators of trend behaviour because they include irregular or non-seasonal movements. Trend estimates are derived by applying a 13-term Henderson moving average to the seasonally adjusted series. The use of a 13-term Henderson average can result in revisions to the estimates for the most recent six months as additional observations become available. Revisions can also occur because of changes in the original data and as a result of the annual re-estimation of the seasonal factors.

EXPLANATORY NOTES *continued*

SIGN CONVENTION

9 In keeping with balance of payments conventions, where statistics are on a balance of payments basis, credit entries (exports) are shown without sign and debit items (imports) are shown as negative entries. For statistics on a recorded trade basis, both imports and exports are shown without sign. The calculation of percentage changes on balance of payments debit items are made without regard to sign. References to balance of payments debit items in Key Figures, Key Points, and Analysis and Comments are also made without regard to sign.

COMMODITY BREAKDOWNS OF GOODS

10 For details of the classification used for goods exports on a balance of payments basis (credits), see table 6.6 in *Balance of Payments and International Investment Position, Australia: Concepts, Sources and Methods, 1998* (cat. no. 5331.0).

11 Details of the classification of goods imports on a balance of payments basis (debits) are provided in table 6.7 in cat. no. 5331.0. Most of the commodity groups shown in table 4 for goods debits are available for more detailed subgroups from AusStats.

12 The recorded trade statistics shown in tables 8 and 9 are classified by the Standard International Trade Classification 2 (SITC). The first section of tables 8 and 9 show the most significant commodities (by value) at the SITC 3 digit level.

COMMODITY BREAKDOWNS OF SERVICES

13 The quarterly detailed services data published in table 7 are consistent with the monthly aggregates shown in table 5. Services trade data by major partner countries and by Australian state of production/consumption are published on a financial year basis and a calendar year basis.

14 Monthly indicators for many of the services components that are only surveyed quarterly are not available. In particular, the Freight and Other transportation components of Total services credits are not available for publication on a monthly basis. The estimates for these items shown in table 5 are therefore derived by dividing the quarterly estimate by three. Where quarterly survey data are not available, freight debits are derived directly from imports data for the reference month as a difference between total merchandise cost, insurance and freight (CIFE) and free on board (FOB), adjusted to reflect timing and processing adjustments. For freight credits and other transportation credits and debits, estimates are derived by extrapolating the last month's data by an average of movements for the same month over the three previous years.

TOURISM RELATED SERVICES

15 The tourism related services memorandum items provide timely indicators of the movements in tourism related activities, not an absolute measure of the level of these activities. These series are not compiled on a Balance of Payments conceptual basis. However, they do provide a reasonable approximation of world tourism related activities.

16 The memorandum items have been derived by re-aggregating relevant components of the international trade in services series of the balance of payments accounts. The tourism related indicator has been derived by combining total travel services (business, education-related and other personal travel), passenger fares, and the air transport component of other transportation services which relates to agency fees and commission receipts.

SERVICES BY STATE AND BY PARTNER COUNTRY

17 Annual services data by state and by partner country are released twice yearly. Calendar year data are released with the March issue of this publication and financial year data are released with the November issue. The data are available from AusStats.

18 Services credits are classified by the state of provision, while services debits are classified by the state of consumption. The state allocations for transportation, travel and communication services are based on a number of indicators including merchandise trade statistics by state, overseas passenger arrivals and departures by state of clearance and data provided by the Department of Education, Science and Training. The allocation

EXPLANATORY NOTES *continued*

SERVICES BY STATE AND BY PARTNER COUNTRY *continued*

for other services (about 25% of all trade in services) is primarily based on the location of the business reporting the information, which serves as a proxy for the state of provision/consumption of that service. The data should be used with care but are considered suitable for analysis over time.

19 A comprehensive explanation of the data sources used and the methodology applied in the compilation of partner country statistics is provided in Chapter 17 of *Balance of Payments and International Investment Position, Australia - Concepts, Sources and Methods* (cat. no. 5331.0). Approximately 9% of total services credits and 5% of total services debits for 2003-4 are either confidential, or unable to be allocated to individual countries.

RELATED PRODUCTS OR SERVICES

20 More detailed balance of payments and recorded merchandise trade data, including forward seasonal factors, are available from AusStats. Very detailed merchandise trade data by commodity, country and state are available by contacting the National Information and Referral Service, as shown on the back of this publication.

21 Users may also wish to refer to the following publications which are available from ABS Bookshops and on the ABS web site:

- *Balance of Payments and International Investment Position, Australia* (cat. no. 5302.0) – issued quarterly
- *International Merchandise Imports, Australia* (cat. no. 5439.0) – issued monthly
- *International Trade Price Indexes, Australia* (cat. no. 6457.0) – issued quarterly
- *Balance of Payments and International Investment Position, Australia: Concepts, Sources and Methods* (cat. no. 5331.0)
- *Information Paper: Quality of Australian Balance of Payments Statistics* (cat. no. 5342.0)
- *International Merchandise Trade, Australia: Concepts, Sources and Methods* (cat. no. 5489.0)
- *A Guide to Australian Balance of Payments and International Investment Position Statistics* (cat. no. 5362.0.55.001).

22 The last four publications are available for free on the ABS web site <<http://www.abs.gov.au>> – select *About Statistics* then *Concepts & Classifications*.

CAUTIONARY NOTE

23 The tables in this publication are presented on two bases. Tables 1-7 contain estimates of Australia's international trade in goods and services which have been adjusted for coverage, valuation and timing to a balance of payments basis. Tables 8-11 contain estimates of merchandise exports and imports based on Australian Customs Service records. Paragraph 5 of the Explanatory Notes provides an explanation of the difference between these bases.

APPENDIX RELATED ARTICLES

<i>Article</i>	<i>Source</i>	<i>Issue</i>
Investment		
Kangaroo bonds	5302.0	Sep qtr 2004
Foreign ownership of equity	5302.0	Sep qtr 2004
Gross external debt	5302.0	Sep qtr 2003
Measuring Australia's foreign currency exposure	5302.0	Dec qtr 2001
Balance of payments		
International comparison of balance of payments statistics	5363.0	1999–2000
The Sydney Olympic Games Update	5368.0	Jul 2000
The Sydney Olympic Games	5302.0	Sep qtr 1999
Merchandise trade		
Australia's Importers, 2003–04	(a) web site	Nov 2004
Australia's Exporters, 2003–04	(a) web site	Oct 2004
Australia's Trade with the USA	(a) web site	Mar 2004
Australia's Exporters, 2002–03	(a) web site	Oct 2003
Australia's Importers, 2002–03	(a) web site	Nov 2003
Export and import currencies, 2003	(a) web site	May 2003
Australia's exporters and importers, 2001–02	5422.0	Dec qtr 2002
Trade through Australia's ports	5422.0	Sep qtr 2002
Australia's trade in wine	5422.0	Dec qtr 2001
Australia's export markets, 1991–92 to 2000–01	5422.0	Jun qtr 2001
Major commodities traded by Australia, 1991 to 2000	5422.0	Dec qtr 2000
Australia's trade in crude petroleum	5422.0	Mar qtr 2000
Australia's merchandise trade with the Republic of Korea	5422.0	Sep qtr 1999
Australia's merchandise trade with Japan	5422.0	Mar qtr 1999
Bilateral merchandise trade statistics reconciliation: Australia and the European Union, 1992 to 1997	5422.0	Sep qtr 1998
Trade in services		
International trade in services by partner country, 2003–04	(a) web site	Nov 2004
International trade in services by State, 2003–04	(a) web site	Nov 2004
International trade in services by partner country, 2003	(a) web site	Mar 2004
International trade in services by State, 2003	(a) web site	Mar 2004
International trade in services by partner country, 2002–03	(a) web site	Oct 2003
International trade in services by State, 2002–03	(a) web site	Oct 2003
Goods and services by region, 2001	5368.0	Feb 2002
International trade in education services	(a) web site	Oct 2002
Finance		
Recent trends in construction and first home buyers finance	5609.0	Mar 2002
Household sector data in the financial accounts	5232.0	Mar qtr 2002
Investment Managers	5655.0	Jun qtr 2000
Venture capital, 1999–2000	5611.0	2000–01
Impact of 2003–2004 farm season on Australian production	5611.0	1999–2000
Globalisation		
Foreign Ownership of Australian Exporters and Importers, 2002–03	5496.0.55.001	2002–03
Australian Outward Foreign Affiliates Trade, 2002–03	5495.0	2002–03
Economic Activity of Foreign Owned Businesses in Australia, 2000–01	5494.0	2000–01
Technical information		
Implementation of New Customs Systems	(a) web site	Aug 2004
Changes to country and port classifications	5368.0	May 2003
The effect of customs changes on export statistics	5422.0	Jun qtr 2002
Harmonized system changes	5422.0	Sep qtr 2001
International trade review: data quality and client queries	5422.0	Jun qtr 2000
Data confidentiality	5422.0	Dec qtr 1999

(a) International Trade Theme Page: Select Themes; Economy; International Trade; Topics of Interest.

FOR MORE INFORMATION . . .

- INTERNET* **www.abs.gov.au** the ABS web site is the best place to start for access to summary data from our latest publications, information about the ABS, advice about upcoming releases, our catalogue, and Australia Now—a statistical profile.
- LIBRARY* A range of ABS publications is available from public and tertiary libraries Australia-wide. Contact your nearest library to determine whether it has the ABS statistics you require, or visit our web site for a list of libraries.
- CPI INFOLINE* For current and historical Consumer Price Index data, call 1902 981 074 (call cost 77c per minute).
- DIAL-A-STATISTIC* This service now provides only current Consumer Price Index statistics call 1900 986 400 (call cost 77c per minute).

INFORMATION SERVICE

Data already published that can be provided within five minutes will be free of charge. Our information consultants can also help you to access the full range of ABS information—ABS user pays services can be tailored to your needs, time frame and budget. Publications may be purchased. Specialists are on hand to help you with analytical or methodological advice.

- PHONE* 1300 135 070
- EMAIL* client.services@abs.gov.au
- FAX* 1300 135 211
- POST* Client Services, ABS, GPO Box 796, Sydney NSW 2001

WHY NOT SUBSCRIBE?

ABS subscription services provide regular, convenient and prompt deliveries of selected ABS publications and products as they are released. Email delivery of monthly and quarterly publications is available.

- PHONE* 1300 366 323
- EMAIL* subscriptions@abs.gov.au
- FAX* (03) 9615 7848
- POST* Subscription Services, ABS, GPO Box 2796Y, Melbourne Vic 3001



2536800003050

ISSN 1328 2778

RRP \$23.00